

SEElight

SEElight Trading LTD

Unit 8, Waterside Park, Milton Keynes, MK12 5NP - UK

T: 01908 313 083

E: customerservice@seelight.co.uk

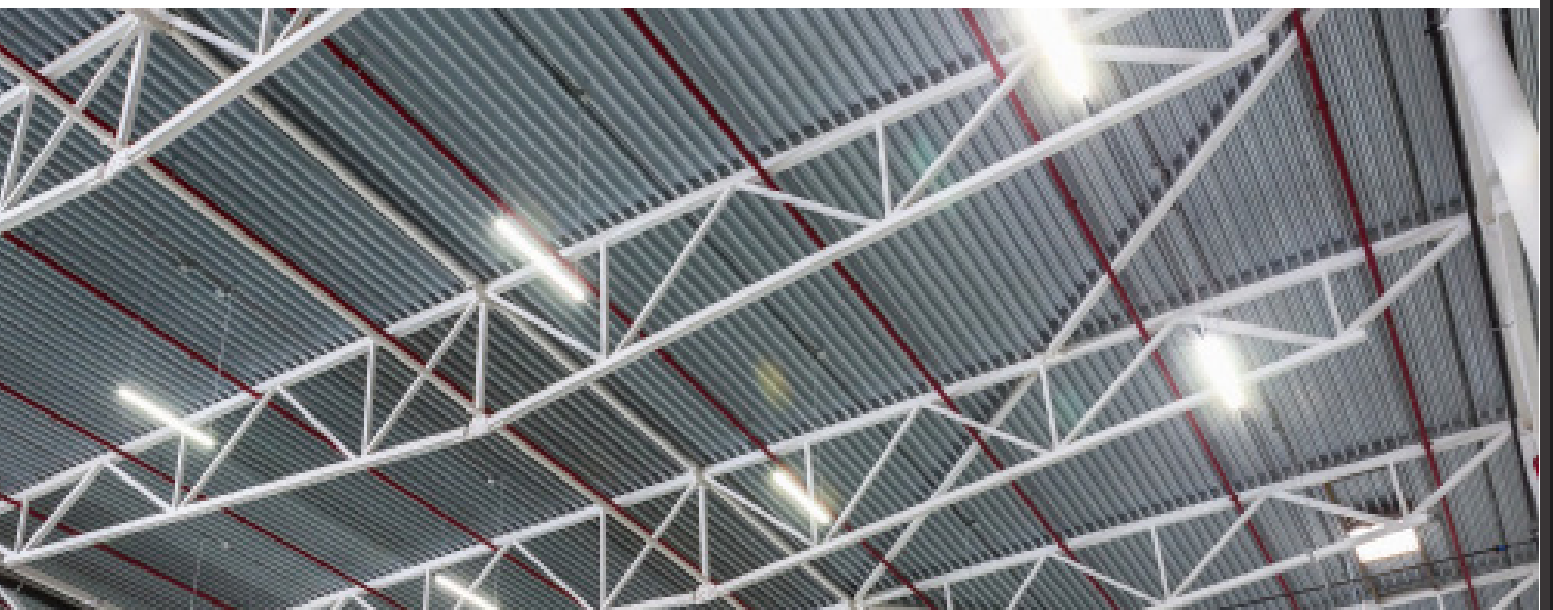
W: www.seelight.co.uk



TRADE CATALOGUE

CONTENT

ECO LED PANEL	3
.....	
EXCEL LED PANEL	4
.....	
A NOTE ABOUT QUALITY	5
.....	
EXCEL LED BATTEN	6
.....	
ECO LED BATTEN	7
.....	
DELUXE LED BATTEN	8
.....	
PROCUREMENT PROCESS	9
.....	
LED STRIP LIGHTS	10
.....	
ALUMINIUM CHANNEL	11
.....	
ACCESSORIES	12
.....	
TWILIGHT SYSTEM	13 - 20



FIRSTLY

THANK YOU

FOR CONSIDERING US!

At SEElight, we have a mission to provide a selection of affordable LED light products. We believe quality design does not have to be expensive. We strive to offer unbeatable prices to our customers.

Our trade catalogue has a selection of safe, efficient and economical LED products, but it doesn't stop there. We are specialists in finding the perfect item for you. Our team can source the right products you require without going through a complicated procurement procedure.

No matter what you need, we are here to help.

Dennis Yau
Customer Director

3

ECO LED PANEL LIGHT

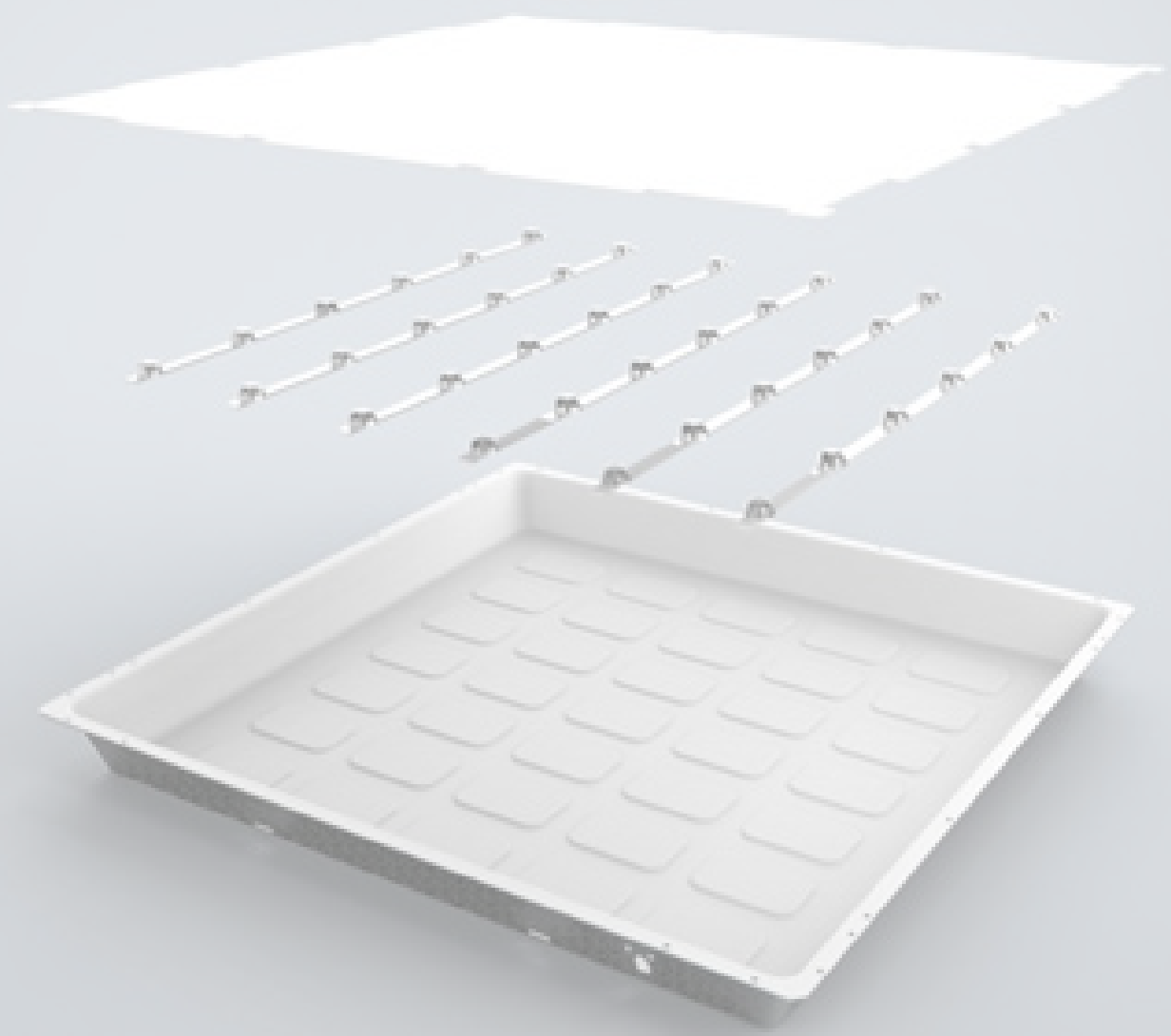
SL-PLE6060-120

IP20 * UGR<19 * 595x595 mm * 5 Year Warranty * 4000k (Cool white)
36w - 120 lm / w * 4320 Lumens * 50,000+hrs * Flicker free, CE, RoHS

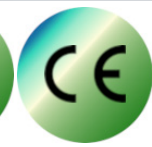
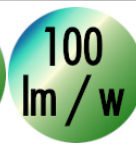


4

EXCEL LED PANEL LIGHT



PHILIPS
LUMILEDS



ESP3610

IP20 * IK04 * UGR<19 * 595x595 mm * 5 Year Warranty * 4000k (Cool white)
Philips lumileds technology * 36w - 100 lm / w * 3600 Lumens * 50,000+hrs
Mitsubishi PC cover - no discolouration for 10 years * Flicker free, CE, RoHS
*Galvanised aluminium rear plate

QUALITY AT A REASONABLE PRICE

... ENLIGHTEN THE ILLUMINATION

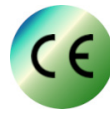
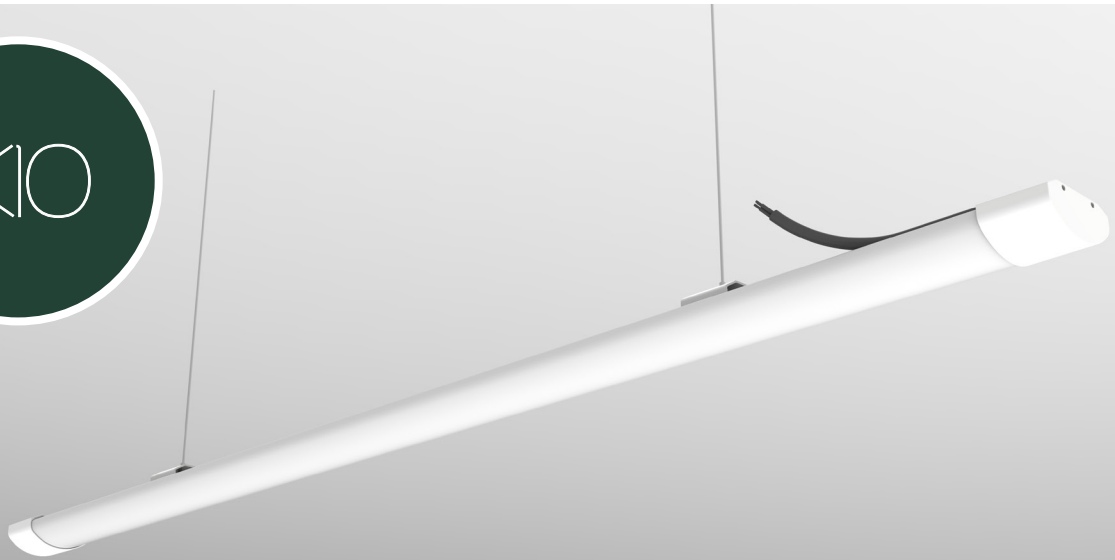
QUALITY PROCUREMENT IS OUR PLAYGROUND

We are committed to providing quality products with competitive pricing. Value for money is essential more than ever in today's economic climate; therefore, we endeavour to exceed our customer's expectations when looking for cost-effective solutions.

6 EXCEL LED BATTEN LIGHT

ESB3012

IP20 * IK10 * 1.2M * 5 Year Warranty * 4000k (Cool white) * Surge Protection
Philips lumileds technology * 30w - 120 lm / w * 3600 Lumens * 50,000+hrs
Mitsubishi PC cover - no discolouration for 10 years * Flicker free, CE, RoHS
* Includes clips, screws, 2x 1M steel rope for mounted/suspended install.



All of our batten
use Mitsubishi
polycarbonate, meaning
there will be no colour
loss for over ten years.



All of our batten use
Philips Lumileds 2835
LED technology - 20%
brighter whilst using
fewer watts vs other
LED technologies.



Our batten are German
design and patented.
They are procured by
both the UK and the
German government by
our supplier.

7

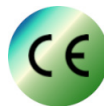
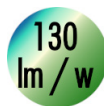
ECO

LED BATTEN LIGHT

EMB3413

IP66 * IK08 * Anti Corrosive * 1.5M * 5 Year Warranty * 4000k (Cool white)
Philips lumileds technology * 34w - 130 lm / w * 4420 Lumens * 50,000+hrs
Mitsubishi PC cover - no discolouration for 10 years * Flicker free, CE, RoHS
* Includes clips, screws, 2x 1M steel rope for mounted/suspended install.

SAFE • EFFICIENT • ECO

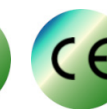
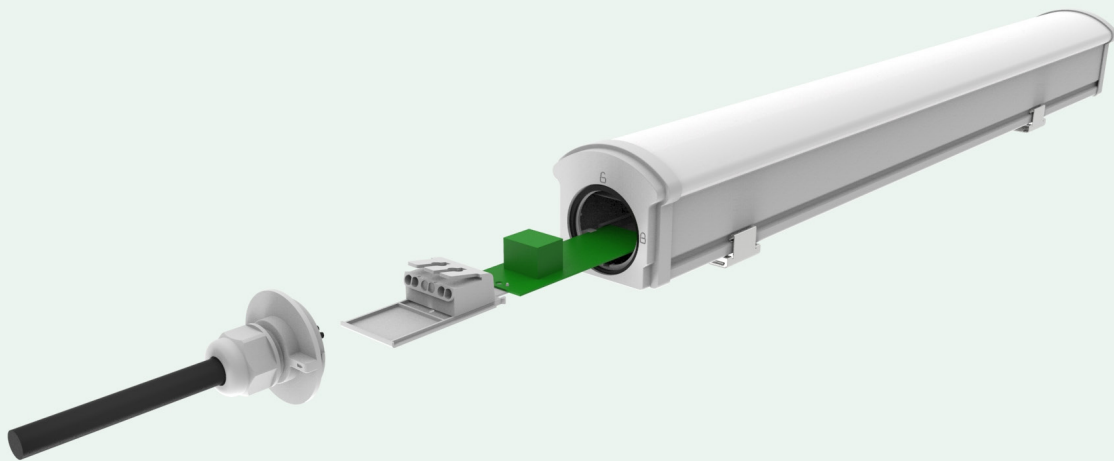


DELUXE LED BATTEN LIGHT



DSB4315

IP66 * IK10 * Anti Corrosive * 1.5M * 5 Year Warranty * 4000k (Cool white)
 Philips lumileds technology * 43w - 150 lm / w * 6450 Lumens * 50,000+hrs
 Mitsubishi PC cover - no discolouration for 10 years * Flicker free, CE, RoHS
 * Includes clips, screws, 2x 1M steel rope for mounted/suspended install.



9

INNOVATIVE APPROACH IN SEARCH OF THE PERFECT LIGHTING SOLUTION



PROJECT DEFINITION

SPECIFY WHAT YOU NEED

If you have a lighting requirement and you cannot quite get what you need or feel the price is too high, you are welcome to discuss your specifications with us to try and achieve your objective.



SUPPLIER NETWORK

UNIQUE SUPPLIER RELATIONSHIP

Our purchasing expert has extensive experience in international supply chains. With our unique relationship, we are embedded directly with suppliers and have unparalleled access to a multitude of supply networks.



VISUAL DESIGN

BESPOKE DESIGN OPTIONS

We can obtain the product samples you need and discuss branding options, bespoke quantities, packaging and specs, or if you wish to create your own brand of lighting products.



TESTING

PRODUCT TESTING

Once we have procured your relevant products, we will provide samples with finalised specifications and artwork, and we will offer the product for testing before the commitment to launch.



LAUNCH

READY FOR MARKET

Once your product is ready for launch,, we can take care of the international transportation, delivering your bespoke product to your door or stored within our facilities.

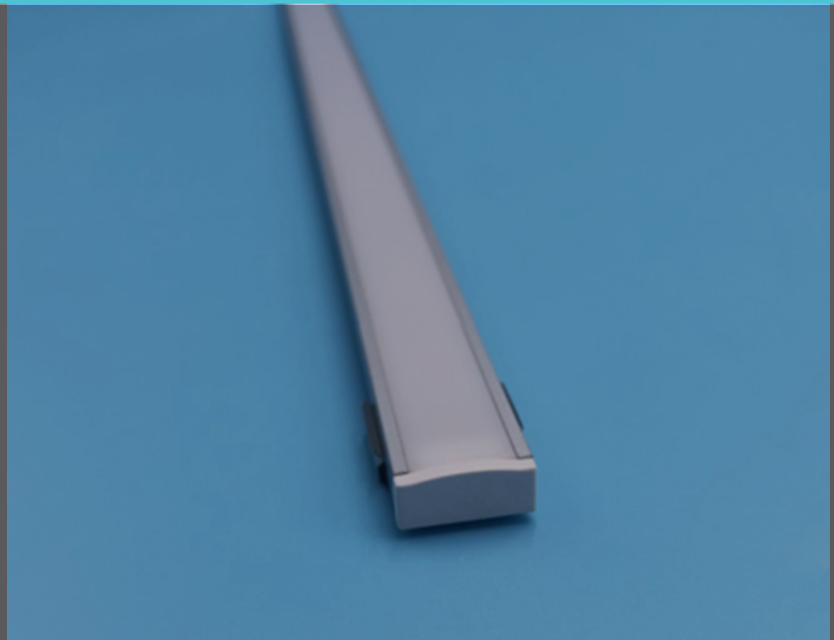
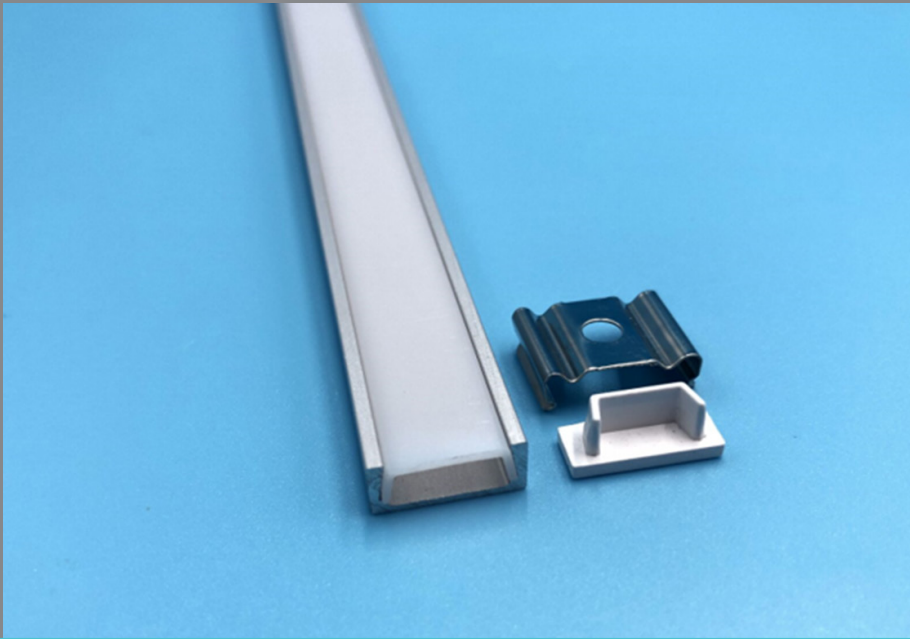


SEElight



LED STRIP TAPE

5M Reels - 120 LED - 9W per meter or 240 LED - 12W per meter options - Available in IP20 and IP65 - Dimmable (IR controller also available)
3 Year Warranty - 3M branded tape - 3000K / 4000K / 6000K options - 2.5cm cut for 120 LED and 1.25cm cut for 240 LED - up to 1262 l/m - Beam Angle - 120° - CE, RoHS



LED STRIP LIGHTS

ALUMINIUM CHANNEL

High-Grade Silver Anodized Aluminium * Teijin PC cover * Available in 2M / 3M lengths
* 15mm (W) x 6mm (D) Size * Profile End Cap Set * Nickel-Plated Steel Mounting
Bracket * Surface-mounted/recessed installation * Only available in boxes of 150M

12

ACCESSORIES

12V LED DRIVER

Available in 60W / 100W / 150W / 200W * 5 Year Warranty

Slim-Line Aluminium Design * AC190 – 240V Input



IR CONTROLLER WITH REMOTE

Dimmable 10% - 100% * IR Range of 10 Meters
* 5 Year Warranty



SEElight

www.seelight.co.uk

13 - Twilight
System

TWILIGHT
12V LED STRIP SYSTEM
SAFE • EFFICIENT • ECO

Twilight 12V LED system


Versatile lighting solution for
any room in your home.

Twilight Contents

15	Why Chose Twilight?
16	12V Driver / Downlights / Sensors
17	Flexibility
18	Applications
19	Aluminium channel and Surface mountable option
20	System Parts
21	Useful Information



Why chose Twilight?

- 01  Twilight uses LED combining the efficiency of long-lasting LED technology with the economical energy-saving design.
- 02  Twilight keeps lighting costs lower.
- 03  Twilight reduces your carbon footprint.
- 04  Twilight gives you flexibility with endless customisations for all types of applications.

Create the perfect
cabinet, mood, task
or accent lighting

12V LED DRIVER

16



The 12V LED driver can power up to 8 types of Twilight LEDs. All Twilight lights and components are powered by the driver.

DOWNLIGHTS

Downlights can be used for many applications but are ideal for either under-cabinet task lighting or accent lighting in cabinets with glass doors.



SENSOR OPTIONS



The LED driver can be used with a selection of sensors -
 Touch / Cabinet Double Door /
 Motion / Single Door

FLEXIBILITY



Twilight offers true flexibility with sensor options to downlights and customisable LED strip lighting integrating perfect lighting anywhere in your home.



Kitchen design and build by Drawers n Doors - www.drawersnddoors.co.uk



ALUMINIUM CHANNEL

Use an Aluminium channel to enclose your LED tape; in addition to the aesthetics, the polycarbonate cover will diffuse your lighting, creating the perfect dotless effect mood lighting.



SURFACE-MOUNTABLE OPTION

The surface-mountable LED gives the option to install downlighting without the need to recess into fittings or fixtures.



APPLICATIONS



DOWNLIGHTING



UNDER CABINET LIGHTING



UNDER COUNTER LIGHTING



FLOOR LIGHTING

SYSTEM PARTS

SKU	Description	Size	Packaging QTY	Colour	Power	Lumen	Dimmable
LED Tape							
STB12012203	DC12V Strip Light 3000k IP20, 120led/m	8*3mm	5 m/reel	3000k (Warm white)	9w/m	842	Yes
STB12012204	DC12V Strip Light 4000k IP20, 120led/m	8*3mm	5 m/reel	4000k (Cool white)	9w/m	907	Yes
STB12012206	DC12V Strip Light 6000k IP20, 120led/m	8*3mm	5 m/reel	6000k (Day light)	9w/m	871	Yes
STB12012653	DC12V Strip Light 3000k IP65, 120led/m	10mm	5 m/reel	3000k (Warm white)	9w/m	842	Yes
STB12012654	DC12V Strip Light 4000k IP65, 120led/m	10mm	5 m/reel	4000k (Cool white)	9w/m	907	Yes
STB12012656	DC12V Strip Light 6000k IP65, 120led/m	10mm	5 m/reel	6000k (Day light)	9w/m	871	Yes
STB24012203	DC12V Strip Light 3000k IP20, 240led/m	8*3mm	5 m/reel	3000k (Warm white)	12w/m	1165	Yes
STB24012204	DC12V Strip Light 4000k IP20, 240led/m	8*3mm	5 m/reel	4000k (Cool white)	12w/m	1262	Yes
STB24012206	DC12V Strip Light 6000k IP20, 240led/m	8*3mm	5 m/reel	6000k (Day light)	12w/m	1213	Yes
STB24012653	DC12V Strip Light 3000k IP65, 240led/m	10mm	5 m/reel	3000k (Warm white)	12w/m	1165	Yes
STB24012654	DC12V Strip Light 4000k IP65, 240led/m	10mm	5 m/reel	4000k (Cool white)	12w/m	1262	Yes
STB24012656	DC12V Strip Light 6000k IP65, 240led/m	10mm	5 m/reel	6000k (Day light)	12w/m	1213	Yes
Profile							
S0273	Slim Aluminium Led Strip Light Channel 3m with PC cover	15*6*3000 mm	150m/box	Silver	n/a	N/A	N/A
S0272	Slim Aluminium Led Strip Light Channel 2m with PC cover	15*6*2000 mm	150m/box	Silver	n/a	N/A	N/A
S027LR	Aluminium Channel End Cap Set	-	200sets/box	White	n/a	N/A	N/A
S027M	Aluminium Channel Mounting Clip	-	200pcs/box	Steel	n/a	N/A	N/A
Drivers							
TWLD26	Twilight LED Driver 26W inc 1500mm lead	155*52*20 mm	1pcs/box	Black	26w	n/a	n/a
TWLD60	Twilight LED Driver 60W inc 1500mm lead	210*52*25 mm	1pcs/box	Black	60w	n/a	n/a
Sensors							
TWLS31	Twilight Touch Sensor - Dimmable	2M	1pcs/box	White	n/a	n/a	n/a
TWLS32	Twilight Double Door Sensor	2M	1pcs/box	White	n/a	n/a	n/a
TWLS33	Twilight Motion Sensor	2M	1pcs/box	White	n/a	n/a	n/a
TWLS34	Twilight Wave and Door Sensor	2M	1pcs/box	White	n/a	n/a	n/a
Cables / Accessories							
UKP35	Standard UK mains plug	n/a	4pcs/box	Black	n/a	n/a	n/a
TWLA38	2m Wire Extension	2M	10pcs/bag	White	n/a	n/a	n/a
TWLA36	2m Sensor Extension	2M	10pcs/bag	White	n/a	n/a	n/a
TWLA37	Twilight LED tape Adapter	2M	10pcs/bag	White	n/a	n/a	n/a
TWLA39	10mm Connector wire to LED tape - 2 pin	n/a	50pcs/bag	White	n/a	n/a	n/a
TWLA40	10mm Connector LED tape to tape - 2 pin	n/a	50pcs/bag	Clear	n/a	n/a	n/a
TWLA41	10mm Connector L shape LED tape to tape - 2 pin	n/a	25pcs/bag	Clear	n/a	n/a	n/a
TWLA50	Output Adaptor Universal	n/a	10pcs/bag	White	n/a	n/a	n/a
TWLA51	Sensor 4 pin male to 3 pin Adaptor	n/a	10pcs/bag	White	n/a	n/a	n/a
Dimmable Downlights							
TL2RB3000	Twilight Circular Downlight - Black - 3K	69*14 mm	1pcs/box	3000k (Warm white)	2w	210-240	Yes
TL2RB4000	Twilight Circular Downlight - Black - 4K	69*14 mm	1pcs/box	4000k (Cool white)	2w	210-240	Yes
TL2C3000	Twilight Circular Downlight - Silver - Clear 3K	65*11 mm	1pcs/box	3000k (Warm white)	2w	350	Yes
TL2C4000	Twilight Circular Downlight - Silver - Clear 4K	65*11 mm	1pcs/box	4000k (Cool white)	2w	350	Yes
TL2RW3000	Twilight Circular Downlight - Silver - 3K	69*14 mm	1pcs/box	3000k (Warm white)	2w	210-240	Yes
TL2RW4000	Twilight Circular Downlight - Silver - 4K	69*14 mm	1pcs/box	4000k (Cool white)	2w	210-240	Yes
TL2CS3000	Twilight Circular Downlight - Chrome - Frosted (surface-mountable) - 3K	60*7 mm	1pcs/box	3000k (Warm white)	2w	210-240	Yes
TL2CS4000	Twilight Circular Downlight - Chrome - Frosted (surface-mountable) - 4K	60*7 mm	1pcs/box	4000k (Cool white)	2w	210-240	Yes
TL2SW3000	Twilight Square Downlight - White - 3K	69*14 mm	1pcs/box	3000k (Warm white)	2w	210-240	Yes
TL2SW4000	Twilight Square Downlight - White - 4K	69*14 mm	1pcs/box	4000k (Cool white)	2w	210-240	Yes

Credits - Twilight images courtesy of Drawers n Doors
www.drawersnddoors.co.uk